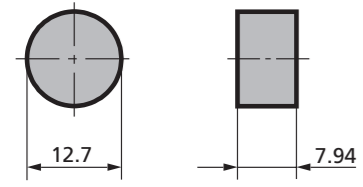
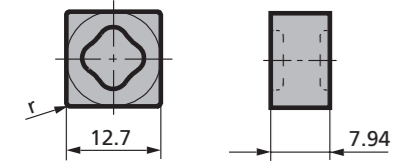


Insert	Type	Grade	SPK-Ref. No.
RNGN 12 07 00 T-S	RNGN 12 07 00 T-S	BKT 120	24.42.046.683

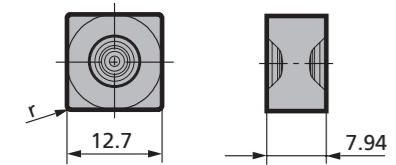


SNGX 12 07 .. T-S	SNGX 12 07 12 T-S	BKT 120	24.12.731.68.3
-------------------	-------------------	---------	----------------



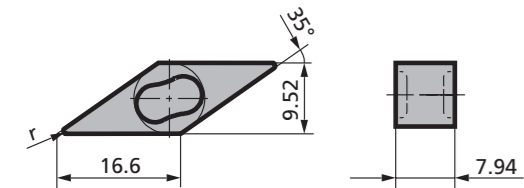
SNGX 12 07 16 T-S	BKT 120	24.12.732.68.3
-------------------	---------	----------------

SNGX 12 07 .. T-S H10M	SNGX 12 07 12 T-S H10M	BKT 120	24.12.729.68.3
------------------------	------------------------	---------	----------------



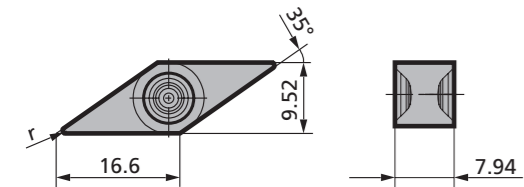
SNGX 12 07 16 T-S H10M	BKT 120	24.12.730.68.3
------------------------	---------	----------------

VNGX 16 07 .. T-S	VNGX 16 07 12 T-S	BKT 120	24.52.749.68.3
-------------------	-------------------	---------	----------------

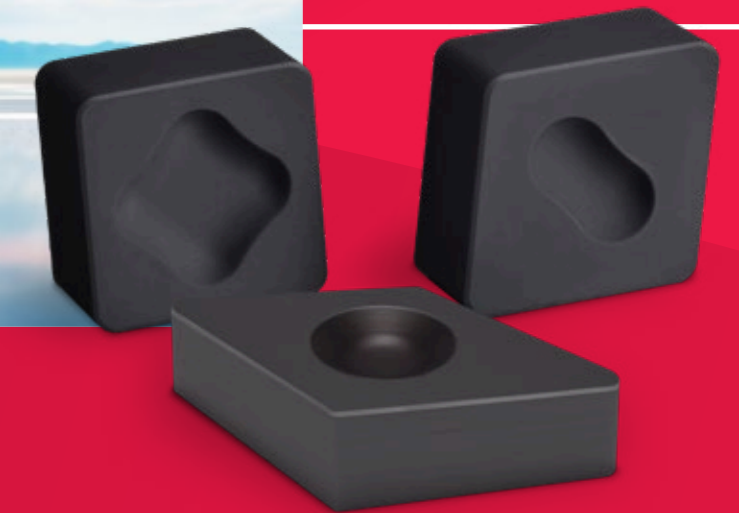


VNGX 16 07 16 T-S	BKT 120	24.52.767.68.3
-------------------	---------	----------------

VNGX 16 07 .. T-S H10M	VNGX 16 07 12 T-S H10M	BKT 120	24.52.759.68.3
------------------------	------------------------	---------	----------------



VNGX 16 07 16 T-S H10M	BKT 120	24.52.760.68.3
------------------------	---------	----------------



CUTTING TOOLS

**CBN Inserts in  
7.94 mm Thickness**



SPK Cutting Tools  
by CeramTec GmbH  
Hauptstraße 56  
73061 Ebersbach / Fils, Germany

Phone: +49 7163 166-239  
info@spk-tools.com  
www.spk-tools.com



Website  
www.spk-tools.com

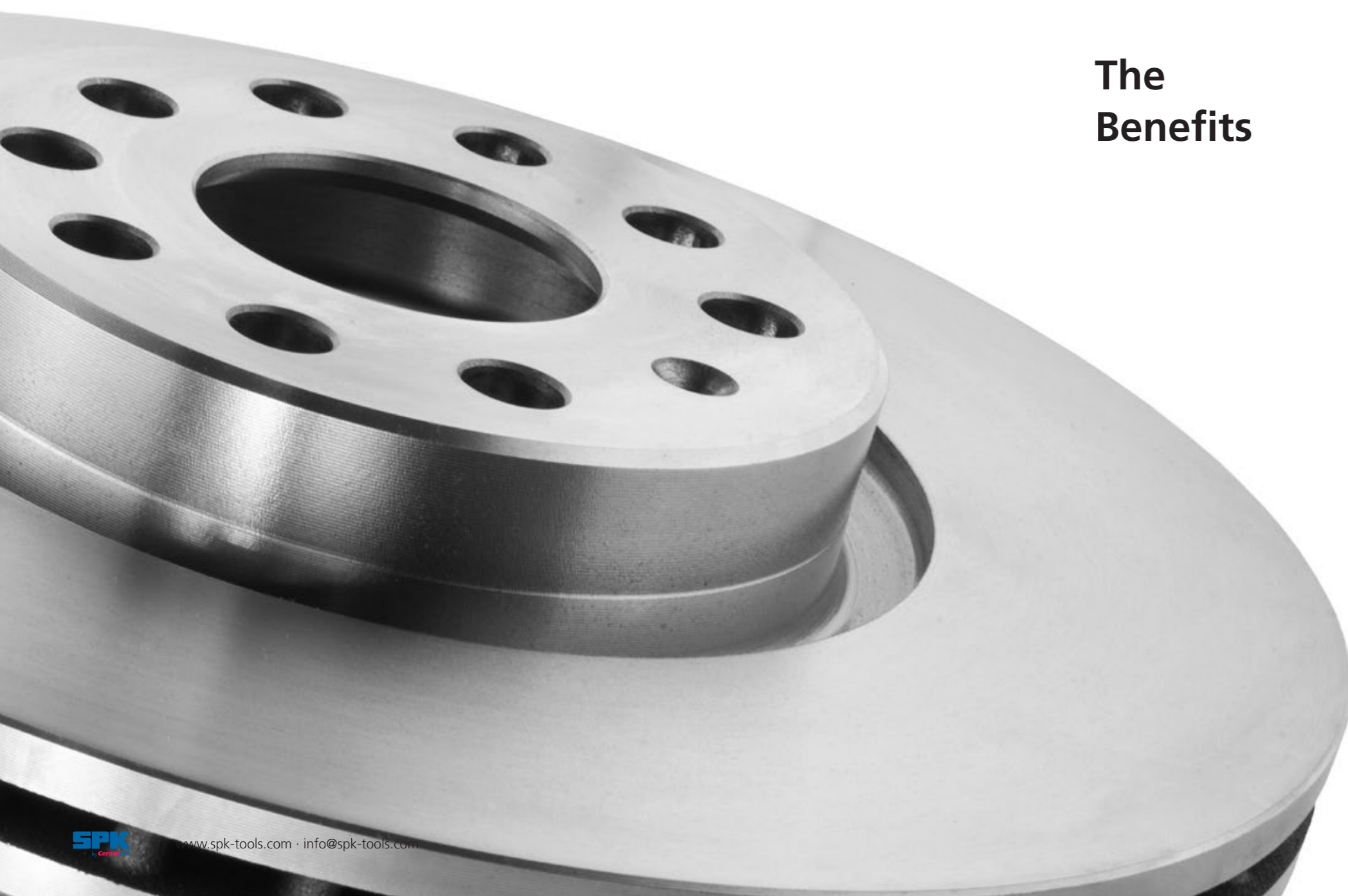
YouTube Channel:  
SPKCuttingTools

EN / 2407 / IM



## CBN inserts in 7.94 mm

SPK Cutting Tools is a manufacturer of high content CBN cutting materials for machining cast iron. In addition to our extensive range of CBN inserts, we now also offer 7.94 mm inserts with different dimple designs. This allows SPK customers to switch from CBN quickly and easily to ceramic and back again. Best of all: Geometrically identical inserts are available in two high-performance cutting materials.



## The Benefits

- The dimple designs of the inserts enable stable mounting of the indexable inserts in the insert seat of the tool holder.
- The dimple clamping prevents any movement of the cutting insert in the tool holder and reduces tool breakage.
- Dimple clamping enables maximum operational reliability during machining, even under unfavorable cutting conditions such as interrupted cuts, changing cutting depths and cutting directions.
- IX and -H10M dimple versions: -IX the classic dimple version, positive and non-positive clamping for a wide range of tools, -H10M the rotationally symmetrical dimple version in conjunction with the new ICT clamping holders for even greater stability and directional retraction into the insert seat.
- Ensures the direct interchangeability of ceramic and CBN indexable inserts with a thickness of 7.94 mm in the identical tool. Only the clamping element needs to be replaced.
- Opens up the possibility of using a wide range of cutting materials for machining GJL cast iron without changing the tool system.
- Extends the variability of the existing tool solution and requires no additional tooling.
- Adapts the cutting material to the prevailing operating conditions and thus allows best possible efficiency and productivity in use:
  - Optimum adaptability of machining for different machinability of different cast iron batches.
  - Simple adaptation of the cutting material type and grade to the machining conditions "fresh" cast iron – older cast iron.

Insert	Type	Grade	SPK-Ref. No.
	CNGX 12 07 12 T-S	BKT 120	24.52.761.68.3
	CNGX 12 07 16 T-S	BKT 120	24.52.762.68.3
	CNGX 12 07 12 T-S H10M	BKT 120	24.52.753.68.3
	CNGX 12 07 16 T-S H10M	BKT 120	24.52.754.68.3
	DNGX 12 07 12 T-S	BKT 120	24.52.763.68.3
	DNGX 12 07 16 T-S	BKT 120	24.52.764.68.3
	DNGX 12 07 12 T-S H10M	BKT 120	24.52.755.68.3
	DNGX 12 07 16 T-S H10M	BKT 120	24.52.756.68.3
	DNGX 15 07 12 T-S	BKT 120	24.52.765.68.3
	DNGX 15 07 16 T-S	BKT 120	24.52.766.68.3
	DNGX 15 07 12 T-S H10M	BKT 120	24.52.757.68.3
	DNGX 15 07 16 T-S H10M	BKT 120	24.52.758.68.3